



# Pathways to Graduation & Life

Stanwood - Camano School District



# Topics for Today

- Graduation Requirements
- Resources
- Pathways





# GRADUATION REQUIREMENTS

# GRADUATION REQUIREMENTS

## Class of 2021 and Beyond

- Complete 24 Career & College Ready High School Credits
- Complete a Graduation Pathway
- Complete a High School & Beyond Plan



# CREDIT REQUIREMENTS

## 17 CORE CREDITS

ENGLISH	4 credits
MATH	3 credits
• ALGEBRA	
• GEOMETRY	
• 3 <sup>rd</sup> Year Math	
SCIENCE	3 credits
SOCIAL STUDIES	3 cred.
• World History	
• US History	
• CWP/Civics	
HEALTH & FITNESS:	
• Health	0.5 credit
• PE	1.5 credits
CTE	1 credit
Art	1 credit



## 3 PERSONALIZED PATHWAY CREDITS

3 Credits that lead to a specific post-secondary career or educational goal chosen by the student as part of their High School & Beyond Plan

Options Include:

- World Language
- 1 Additional Art
- Career & Technical Ed.

Or any combination of classes that relate to a student's specific goal.



## 4 ELECTIVE CREDITS

4 additional credits in any area of study. The intent is to allow students to explore opportunities



## 24 Career & College Ready Graduation Credits

# FLEXIBILITY

- 7 flexible “elective” style credits to explore (up from 5.5)
- Flexibility in choice for all credit areas to meet students post-secondary goals
- Expanded offerings at Stanwood High School
- Expanded offerings at Lincoln Hill High School

# GRADUATION PATHWAY

- Demonstrate College & Career Readiness in English Language Arts (ELA) and Math
- Demonstrate Career Readiness with a Career and Technical Education (CTE) Course Sequence
- Demonstrate Armed Services Readiness with Armed Services Vocational Aptitude Battery (ASVAB) Test Scores

## A. Demonstrate College & Career Readiness in ELA and Math

### Smarter Balanced (SBA) test in ELA and Math

The first pathway is to meet graduation cut scores on state tests. All students take the tests in 10th grade.  
(ELA  $\geq$  2548; Math  $\geq$  2595)

#### Additional ways to demonstrate in ELA

- ACT Writing ( $\geq$  14)
- SAT w/ Essay ( $\geq$  410)
- AP Exam ( $\geq$  3) or Course Grade ( $\geq$  C+)
  - AP English Language
  - AP English Literature
  - AP Comparative Government
  - AP US History
  - AP World History
- Dual Credit ELA Course
  - College in the High School
  - Running Start

#### Additional ways to demonstrate in MATH

- ACT Math ( $\geq$  16)
- SAT Math ( $\geq$  430)
- AP Exam ( $\geq$  3) or Course Grade ( $\geq$  C+)
  - AP Calculus
  - AP Statistics
- Dual Credit ELA Course
  - College in the High School
  - Running Start

## B. Demonstrate Career Readiness with a CTE Course Sequence

Students can meet this pathway requirement with a designated CTE Course Sequence following their high school & beyond plan.  
(See Reverse Side)



## C. Demonstrate Armed Services Readiness with ASVAB Test Scores

Students choosing this pathway must meet the minimum enlistment score for a branch of the military.  
(Scores determined by State Board of Ed. in Nov '19)



# HIGH SCHOOL & BEYOND PLAN

## Components:

- Career Goals
- Educational Goals
- Course Taking Plan
- Resume or Activity Log
- Evidence received information on state and federal financial aid programs

\*Students not on track to graduate must identify interventions and academic supports and classes.





# RESOURCES & SUPPORTS

# INTERVENTIONS

- Summer School
- Credit Retrieval
- Graduation Intervention Specialist
- Jobs for America's Grads (JAG)
- Open Doors
- Student Support Team
- Family Meetings



# OTHER SUPPORTS

- Career & College Fair
- Free Application for Federal Student Aid (FAFSA) Night
- Stanwood Camano Area Foundation (SCAF) Scholarships
- Workforce Development, Regional Apprenticeship Program
- Everett Community College Road Show

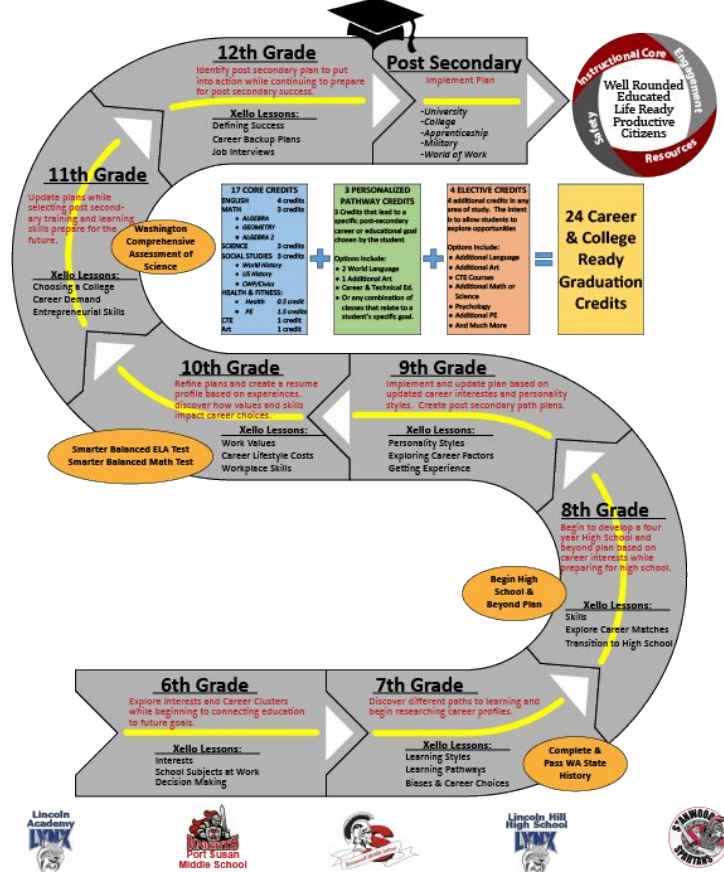




# PLANS & PATHWAYS

# PATHWAYS TO SUCCESS

- A personalized pathway for every student
- 6th thru 12th grade model
- High School & Beyond Plan development begins in grade 8.
- Goal is for every student to have a plan through high school to Post-Secondary Success.



# XELLO

The screenshot displays the Xello user interface for a user named Ross Short. The profile header includes the user's name, location (WA), school (Starwood High School), and grade level (Grade 11). Below the profile, there is a section for 'CAREER MATCHES' with four job listings: Artist (Good Match, \$10,000-\$60,000), Investment Advisor (Good Match, \$30,000-\$180,000), Media Buyer (Fair Match, \$30,000-\$100,000), and Cartoonist (Fair Match, \$20,000-\$70,000). Each listing includes a 'Hide' button. Below the career matches are three assessment sections: 'PERSONALITY STYLE' with a diagram showing 'Builder' as the dominant style, 'LEARNING STYLE' with the question 'How do you learn best?' and three icons (eye, person, hand), and 'AFTER HIGH SCHOOL...' with the goal 'More School or Training' and an 'Edit Goal' button.

- Interest Exploration
- Research
- Plan Development
- Advisory Lessons
- Used in grades 6-12
- Document High School & Beyond Plan

# CAREER READINESS PATHWAY

- Complete a Career & Technical Education (CTE) Course Sequence
- Must align to High School & Beyond Plan
- Include at least 2 Credits
- At least 1 credit must:
  - Lead to Dual Credit or
  - Lead to Industry Certificate





# SAMPLE CTE SEQUENCES

## Ironworker:

- Ag Mechanics 1
- Ag Mechanics 2

## Nursing

- Sports Medicine 1
  - Medical Terminology

## Business

- Intro to Business & Marketing
  - Accounting

## Firefighter or EMT

- Fire Service  
(3 Credit course)

## Engineering

- Engineering Design 1
- CAD/CAM

## Manufacturing

- CAD/CAM
- Woodworking

QUESTIONS?

